

LEGEND

- NORTH PARK BOUNDARY
- AMENDMENT AREA BOUNDARY
- JURISDICTION BOUNDARY
- PRESSURE ZONE BOUNDARY
- PROPOSED ARTERIAL ROADWAY (WITHIN NORTH PARK)
- EXISTING WATER MAIN
- PROPOSED WATER MAIN
- PUMP
- WATER STORAGE TANK CAMPUS

PIPE DIAMETER	
—	8-INCH
—	10-INCH
—	12-INCH
—	16-INCH
—	24-INCH
—	36-INCH

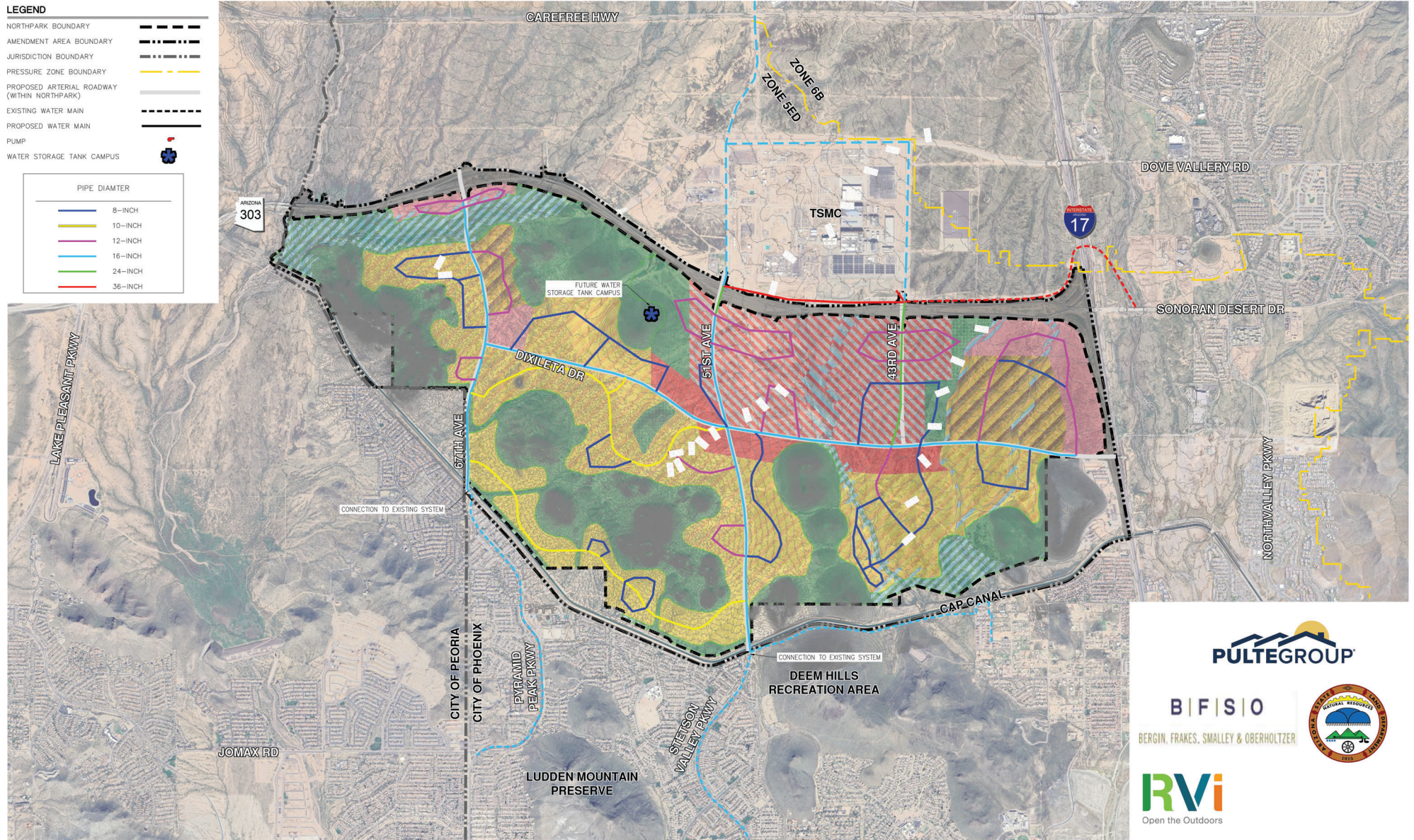


EXHIBIT 15: CONCEPTUAL MASTER WATER PLAN

This plan is conceptual and subject to change through the planning and approval process.
 (U:\000\USA\USA02\Pulte Group\REPORTS\INFRASTRUCTURE ASSESSMENT\ARIZONA\USA Exhibit 15 - Conceptual Master Water Plan 25_1105.dwg 11/15/2025 5:41 PM